



SAS (Sales) Pty Ltd Stainless Steel & Steel Merchants

9 Centre Place
Wetherill Park NSW 2164
Phone: (02) 9725 2221
Fax: (02) 9725 2224

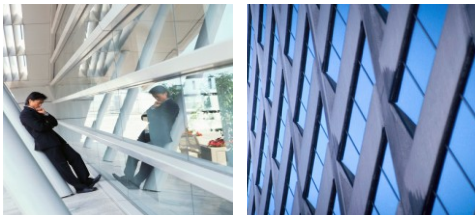
FINISHES SCHEDULE

Round Tube

AW	As welded (not polished)
AWA	As welded & annealed
AWBP	As welded, buff polished (normally 320 grit)
AW 600G	As welded, 600 grit polished
AW MIRROR	As welded - mirror polished
AW GRIT	As welded in a nominated grit polish

Square & Rectangular Tube

AW	As welded
AW SATIN	As welded - satin polished (normally between 120 - 180 grit)



Round Tube O

Outside dia.	Wall Thickness	Grade	Finish	kg/m	kg / length
4.76 mm	0.91	304	304 grade - AWBP (320G)	0.1	6m = 0.6 kg
4.76 mm	0.91	316			
6.35 mm	1.6	304	316 grade AWBP(320G)	0.2	6m = 1.2 kg
6.35 mm	1.6	316			
9.53 mm	1.63	304	OR 600G OR Mirror	0.4	6m = 2.4 kg
9.53 mm	1.63	316			
12.77 mm	1.63	304		0.5	6m = 3 kg
12.77 mm	1.63	316			
15.88 mm	1.63	304		0.6	6m = 3.6 kg
15.88 mm	1.63	316			
15.88 mm	2.03	304		0.75	6m = 4.5 kg
15.88 mm	2.03	316			
19.05 mm	1.22	304		0.6	6m = 3.6 kg
19.05 mm	1.22	316			
19.05 mm	1.63	304		0.72	6m = 4.5 kg
19.05 mm	1.63	316			
25.4 mm	0.91	304		0.56	6m = 3.5 kg
25.4 mm	0.91	316			
25.4 mm	1.22	304		0.75	6m = 4.5 kg
25.4 mm	1.22	316			
25.4 mm	1.63	304		0.98	6m = 6 kg
25.4 mm	1.63	316			
31.75 mm	1.22	304		0.94	6m = 5.7 kg
31.75 mm	1.22	316			
31.75 mm	1.63	304		1.24	6m = 7.5 kg
31.75 mm	1.63	316			
38.1 mm	1.22	304		1.2	6m = 7.2 kg
38.1 mm	1.22	316			
38.1 mm	1.63	304		1.5	6m = 9.0 kg
38.1 mm	1.63	316			
38.1 mm	2.03	304		1.9	6m = 11.4 kg
38.1 mm	2.03	316			
44.45 mm	1.63	304		1.76	6m = 10.6 kg
44.45 mm	1.63	316			
50.8 mm	1.22	304		1.6	6m = 9.6 kg
50.8 mm	1.22	316			
50.8 mm	1.63	304		2.1	6m = 12.6 kg
50.8 mm	1.63	316			
63.5 mm	1.22	304		1.91	6m = 11.5 kg
63.5 mm	1.22	316			
63.5 mm	1.63	304		2.54	6m = 15.3 kg
63.5 mm	1.63	316			
76.2 mm	1.22	304		2.3	6m = 14 kg
76.2 mm	1.22	316			
76.2 mm	1.63	304		3.05	6m = 18.5 kg
76.2 mm	1.63	316			
101.6 mm	1.63	304		4.09	6m = 25 kg
101.6 mm	1.63	316			
127 mm	1.63	304		5.3	6m = 32 kg
127 mm	1.63	316			
127 mm	2.03	304		6.52	6m = 39.5 kg
127 mm	2.03	316			
152.4 mm	1.63	304		6.32	6m = 38 kg
152.4 mm	1.63	316			
152.4 mm	2.03	304		7.85	6m = 47.5 kg
152.4 mm	2.03	316			



Square Tube □			
Section mm	Grade	Finish	kg / m
12.7 x 12.7 x 1.2	304	AW	0.46 kg
12.7 x 12.7 x 1.2	316		
19 x 19 x 1.2	304	SATIN FINISH	0.73 kg
19 x 19 x 1.2	316		
19 x 19 x 1.6	304	180 GRIT	1.0 kg
19 x 19 x 1.6	316		
25.4 x 25.4 x 1.2	304	(all 6m lengths)	1.0 kg
25.4 x 25.4 x 1.2	316		
25.4 x 25.4 x 1.6	304		1.3 kg
25.4 x 25.4 x 1.6	316		
25.4 x 25.4 x 2.0	304		1.6 kg
25.4 x 25.4 x 2.0	316		
31.8 x 31.8 x 1.2	304		1.25 kg
31.8 x 31.8 x 1.2	316		
31.8 x 31.8 x 1.6	304		1.6 kg
31.8 x 31.8 x 1.6	316		
31.8 x 31.8 x 2.0	304		2.0 kg
31.8 x 31.8 x 2.0	316		
38.1 x 38.1 x 1.6	304		2.0 kg
38.1 x 38.1 x 1.6	316		
50.8 x 50.8 x 1.2	304		2.0 kg
50.8 x 50.8 x 1.2	316		
50.8 x 50.8 x 1.6	304		2.6 kg
50.8 x 50.8 x 1.6	316		
50.8 x 50.8 x 3.0	304		4.75 kg
50.8 x 50.8 x 3.0	316		

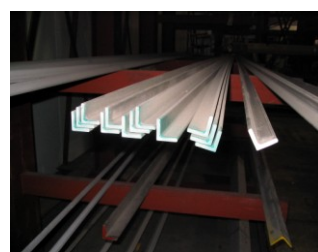
Rectangular Tube □			
Section mm	Grade	Finish	kg / m
50.5 x 25.4 x 1.6	304	AW	2.0 kg
50.5 x 25.4 x 1.6	316		
54.1 x 38.1 x 3.0	304	SATIN FINISH	4.3 kg
54.1 x 38.1 x 3.0	316		
		180 GRIT	


Pipe ○					
Nom. Bore	Outside Dia. ø	Schedule (Wall thick –mm)			Grade
		10S	40S	80S	
6 mm	10.3	1.24	1.73	2.41	304
6 mm	10.3	1.24	1.73	2.41	316
8 mm	13.7	1.65	2.24	3.02	304
8 mm	13.7	1.65	2.24	3.02	316
10 mm	17.1	1.65	2.31	3.2	304
10 mm	17.1	1.65	2.31	3.2	316
15 mm	21.34	2.11	2.77	3.73	304
15 mm	21.34	2.11	2.77	3.73	316
20 mm	26.7	2.11	2.87	3.91	304
20 mm	26.7	2.11	2.87	3.91	316
25 mm	33.4	2.77	3.38	4.55	304
25 mm	33.4	2.77	3.38	4.55	316
32 mm	42.2	2.77	3.56	4.85	304
32 mm	42.2	2.77	3.56	4.85	316
40 mm	48.2	2.77	3.68	5.08	304
40 mm	48.2	2.77	3.68	5.08	316
50 mm	60.3	2.77	3.91	5.54	304
50 mm	60.3	2.77	3.91	5.54	316
65 mm	73	3.05	5.16	7.01	304
65 mm	73	3.05	5.16	7.01	316
80 mm	88.9	3.05	5.49	7.62	304
80 mm	88.9	3.05	5.49	7.62	316
90 mm	101.6	3.05	5.74	8.08	304
90 mm	101.6	3.05	5.74	8.08	316
100 mm	114.3	3.05	6.02	8.56	304
100 mm	114.3	3.05	6.02	8.56	316
125mm	141.3	3.4	6.55	9.53	304
125 mm	141.3	3.4	6.55	9.53	316
150mm	168.3	3.4	7.11	10.97	304
150 mm	168.3	3.4	7.11	10.97	316
200 mm	219.1	3.76	8.18	12.7	304
200 mm	219.1	3.76	8.18	12.7	316
250 mm	273.1	4.19	9.27	12.7	304
250 mm	273.1	4.19	9.27	12.7	316
300 mm	323.9	4.57	9.53	12.7	304
300 mm	323.9	4.57	9.53	12.7	316




Sheet —			
Section (mm)	Grade	Finish	kg / sheet
0.55 x 2400 x 1200	304	2B	13 kg
0.55 x 2400 x 1200	316		
0.7 x 1800 x 1200	304	OR	12.5 kg
0.7 x 1800 x 1200	316		
0.7 x 2400 x 1200	304	N04 BA Mirror	16.5 kg
0.7 x 2400 x 1200	316		
0.9 x 1800 x 900	304		12 kg
0.9 x 1800 x 900	316		
0.9 x 2400 x 900	304		16 kg
0.9 x 2400 x 900	316		
0.9 x 1800 x 1200	304		15.9 kg
0.9 x 1800 x 1200	316		
0.9 x 2400 x 1200	304		21.2 kg
0.9 x 2400 x 1200	316		
1.2 x 1800 x 900	304		15.9 kg
1.2 x 1800 x 900	316		
1.2 x 2400 x 900	304		21.2 kg
1.2 x 2400 x 900	316		
1.2 x 1800 x 1200	304		21.2 kg
1.2 x 1800 x 1200	316		
1.2 x 2400 x 1200	304		28.3 kg
1.2 x 2400 x 1200	316		
1.6 x 1800 x 900	304		21.2 kg
1.6 x 1800 x 900	316		
1.6 x 2400 x 900	304		28.3 kg
1.6 x 2400 x 900	316		
1.6 x 1800 x 1200	304		28.3 kg
1.6 x 1800 x 1200	316		
1.6 x 2400 x 1200	304		37.7 kg
1.6 x 2400 x 1200	316		
2.0 x 2400 x 1200	304		47.1 kg
2.0 x 2400 x 1200	316		
2.5 x 1800 x 1200	304		44.2 kg
2.5 x 1800 x 1200	316		
2.5 x 2400 x 1200	304		58.9 kg
2.5 x 2400 x 1200	316		
3.0 x 1800 x 900	304		39.8 kg
3.0 x 1800 x 900	316		
3.0 x 2400 x 900	304		53 kg
3.0 x 2400 x 900	316		
3.0 x 1800 x 1200	304		53 kg
3.0 x 1800 x 1200	316		
3.0 x 2400 x 1200	304		71 kg
3.0 x 2400 x 1200	316		
3.0 x 3000 x 1500	304		110.4 kg
3.0 x 3000 x 1500	316		

Angle L				
Section (mm)	Grade	Finish	kg/m	kg / length
20 x 20 x 3	304	HRAP (Hot Rolled Annealed & Pickled)	1 kg	6m = 6kg
20 x 20 x 3	316			
25 x 25 x 3	304		1.2 kg	6m = 7.2 kg
25 x 25 x 3	316			
25 x 25 x 5	304		1.9 kg	6m = 11.4 kg
25 x 25 x 5	316			
25 x 25 x 6	304		2.3 kg	6m = 13.8 kg
25 x 25 x 6	316			
30 x 30 x 3	304		1.4 kg	6m = 8.4 kg
30 x 30 x 3	316			
30 x 30 x 5	304		2.4 kg	6m = 14.4 kg
30 x 30 x 5	316			
30 x 30 x 6	304		2.7 kg	6m = 16.2 kg
30 x 30 x 6	316			
40 x 40 x 3	304		1.9 kg	6m = 11.4 kg
40 x 40 x 3	316			
40 x 40 x 5	304		3.1 kg	6m = 18.6 kg
40 x 40 x 5	316			
40 x 40 x 6	304		3.7 kg	6m = 22.2 kg
40 x 40 x 6	316			
50 x 50 x 3	304		2.4 kg	6m = 14.4 kg
50 x 50 x 3	316			
50 x 50 x 5	304		3.9 kg	6m = 23.4 kg
50 x 50 x 5	316			
50 x 50 x 6	304		4.7 kg	6m = 28.2 kg
50 x 50 x 6	316			
50 x 50 x 10	304		7.4 kg	6m = 45 kg
50 x 50 x 10	316			
65 x 65 x 6	304		6.1 kg	6m = 37 kg
65 x 65 x 6	316			
75 x 75 x 6	304		7.1 kg	6m = 43 kg
75 x 75 x 6	316			
75 x 75 x 10	304		11.5 kg	6m = 69 kg
75 x 75 x 10	316			
100 x 100 x 6	304		9.6 kg	6m = 58 kg
100 x 100 x 6	316			
100 x 100 x 10	304		15.6 kg	6m = 93.6 kg
100 x 100 x 10	316			



Hexagonal bar 				
Section (mm)	Grade	Finish	kg/m	kg / length
8 mm	303	CD (Cold Drawn)	0.44 kg	3m = 1.35 kg
8 mm	316			4m = 1.8 kg
9.53 mm	303		0.62 kg	3m = 1.9 kg
9.53 mm	316			4m = 2.5 kg
11.11 mm	303		0.84 kg	3m = 2.6 kg
11.11 mm	316			4m = 3.4 kg
13.34 mm	303		1.25 kg	3m = 3.75 kg
13.34 mm	316			4m = 5.0 kg
15.27 mm	303		1.6 kg	3m = 4.8 kg
15.27 mm	316			4m = 6.4 kg
18.03 mm	303		2.25 kg	3m = 6.75 kg
18.03 mm	316			4m = 9 kg
19.05 mm	303		2.47 kg	3m = 7.5 kg
19.05 mm	316			4m = 10 kg
20.83 mm	303		5.5 kg	3m = 16.5 kg
20.83 mm	316			4m = 22 kg
22.2 mm	303		3.36 kg	3m = 10.1 kg
22.2 mm	316			4m = 13.5 kg
23.37 mm	303		3.75 kg	3m = 11.3 kg
23.37 mm	316			4m = 15 kg
25.65 mm	303		4.5 kg	3m = 13.5 kg
25.65 mm	316			4m = 18 kg
28.57 mm	303		5.5 kg	3m = 16.5 kg
28.57 mm	316			4m = 22 kg
30.48 mm	303		6.35 kg	3m = 19 kg
30.48 mm	316			4m = 25.4 kg
33.05 mm	303		7.5 kg	3m = 22.5 kg
33.05 mm	316			4m = 30 kg
33.3 mm	303		7.6 kg	3m = 22.8 kg
33.3 mm	316			4m = 30.4 kg
37.59 mm	303		9.7 kg	3m = 29 kg
37.59 mm	316			4m = 39 kg
42.42 mm	303		12.3 kg	3m = 37 kg
42.42 mm	316			4m = 49 kg



Flat Bar 				
Section (mm)	Grade	Finish	kg / m	kg / length
12 x 3	304	SRE or HRAP	0.3 kg	4m = 1.2 kg
12 x 3	316			
20 x 3	304	SRE	0.5 kg	4m = 2 kg
20 x 3	316			
20 x 5	304	SRE or HRAP	0.9 kg	4m = 3.6 kg
20 x 5	316			
20 x 6	304	SRE or HRAP	1 kg	4m = 4 kg
20 x 6	316			
25 x 3	304	SRE	0.7 kg	4m = 2.8 kg
25 x 3	316			
25 x 5	304	SRE or HRAP	1.1 kg	4m = 4.4 kg
25 x 5	316			
25 x 6	304	SRE or HRAP	1.3 kg	4m = 5.2 kg
25 x 6	316			
25 x 10	304	HRAP	2.1 kg	4m = 8.4 kg
25 x 10	316			
25 x 12	304	HRAP	2.5 kg	4m = 10 kg
25 x 12	316			
30 x 3	304	SRE	0.85 kg	4m = 3.4 kg
30 x 3	316			
30 x 5	304	SRE or HRAP	1.3 kg	4m = 5.2 kg
30 x 5	316			
30 x 6	304	SRE or HRAP	1.5 kg	4m = 6 kg
30 x 6	316			
30 x 10	304	HRAP	2.5 kg	4m = 10 kg
30 x 10	316			
40 x 3	304	SRE or HRAP	1 kg	4m = 4 kg
40 x 3	316			
40 x 5	304	SRE or HRAP	1.7 kg	4m = 6.8 kg
40 x 5	316			
40 x 6	304	SRE or HRAP	2 kg	4m = 8 kg
40 x 6	316			
40 x 10	304	HRAP	3.3 kg	4m = 13.2 kg
40 x 10	316			
50 x 3	304	SRE or HRAP	1.25 kg	4m = 5.0 kg
50 x 3	316			
50 x 5	304	SRE or HRAP	2.1 kg	4m = 8.4 kg
50 x 5	316			
50 x 6	304	SRE or HRAP	2.5 kg	4m = 10 kg
50 x 6	316			
50 x 10	304	HRAP	4.1 kg	4m = 16.4 kg
50 x 10	316			
50 x 12	304	HRAP	5 kg	4m = 20 kg
50 x 12	316			
65 x 6	304	SRE or HRAP	3.6 kg	4m = 14.4 kg
65 x 6	316			
65 x 10	304	HRAP	5.4 kg	4m = 21.6 kg
65 x 10	316			
75 x 5	304	SRE or HRAP	3.1 kg	4m = 12.4 kg
75 x 5	316			
75 x 6	304	SRE or HRAP	3.7 kg	4m = 14.8 kg
75 x 6	316			
75 x 10	304	HRAP	6.2 kg	4m = 24.8 kg
75 x 10	316			
75 x 12	304	HRAP	7.5 kg	4m = 30 kg
75 x 12	316			
100 x 6	304	SRE or HRAP	5 kg	4m = 20 kg
100 x 6	316			
100 x 10	304	HRAP	8.25 kg	4m = 33 kg
100 x 10	316			
100 x 12	304	HRAP	10 kg	4m = 40 kg
100 x 12	316			
150 x 6	304	SRE	7.5 kg	4m = 30 kg
150 x 6	316			

Sizes and sections listed are normally stock items. Other sizes may be available upon request
All sizes, lengths and weights are approximate.

Round Bar ●				
Section (mm)	Grade	Finish	kg / m	kg / Length
3.18 mm Ø	303	CDP H9	0.065 kg	3.7m = 0.26 kg
3.18 mm Ø	304			4.0m = 0.26 kg
3.18 mm Ø	316			
4.76 mm Ø	303	and	0.15 kg	3.7m = 0.6 kg
4.76 mm Ø	304			4.0m = 0.6 kg
4.76 mm Ø	316			
6.0 mm Ø	303	CG H9	0.24 kg	3.7m = 0.9 kg
6.0 mm Ø	304			4.0m = 1.0 kg
6.0 mm Ø	316			
6.35 mm Ø	303		0.26 kg	3.7m = 1.0 kg
6.35 mm Ø	304			4.0m = 1.1 kg
6.35 mm Ø	316			
7.94 mm Ø	303		0.41 kg	3.7m = 1.5 kg
7.94 mm Ø	304			4.0m = 1.62 kg
7.94 mm Ø	316			
8.0 mm Ø	303		0.42 kg	3.7m = 1.42 kg
8.0 mm Ø	304			4.0m = 1.65 kg
8.0mm Ø	316			
9.53 mm Ø	303		0.59 kg	3.7m = 2.2 kg
9.53 mm Ø	304			4.0m = 2.4 kg
9.53 mm Ø	316			
10 mm Ø	303		0.65 kg	3.7m = 2.4 kg
10 mm Ø	304			4.0m = 2.6 kg
10 mm Ø	316			
11.11 mm Ø	303		0.8 kg	3.7m = 3.0 kg
11.11 mm Ø	304			4.0m = 3.2 kg
11.11 mm Ø	316			
12 mm Ø	303		1 kg	3.7m = 3.45 kg
12 mm Ø	304			4.0m = 3.7 kg
12 mm Ø	316			
12.7 mm Ø	303		1.1 kg	3.7m = 3.9 kg
12.7 mm Ø	304			4.0m = 4.2 kg
12.7 mm Ø	316			
14.29 mm Ø	303		1.32 kg	3.7m = 4.9 kg
14.29 mm Ø	304			4.0m = 5.3 kg
14.29 mm Ø	316			
15.88 mm Ø	303		1.7 kg	3.7m = 6.0 kg
15.88 mm Ø	304			4.0m = 6.5 kg
15.88 mm Ø	316			
16 mm Ø	303		1.7 kg	3.7m = 6.1 kg
16 mm Ø	304			4.0m = 6.6 kg
16 mm Ø	316			
19.05 mm Ø	303		2.35 kg	3.7m = 8.7 kg
19.05 mm Ø	304			4.0m = 9.4 kg
19.05 mm Ø	316			

Round Bar ● (Continued)				
Section	Grade	Finish	kg / m	kg / Length
20 mm Ø	303	CDP H9	2.6 kg	3.7m = 9.6 kg
20 mm Ø	304			4.0m = 10.3 kg
20 mm Ø	316			
22.22 mm Ø	303	and	3.18 kg	3.7m = 11.8
22.22 mm Ø	304			4.0m = 12.7
22.22 mm Ø	316			
25 mm Ø	303	CG H9	4.1 kg	3.7m = 15 kg
25 mm Ø	304			4.0m = 16.1 kg
25 mm Ø	316			
25.4 mm Ø	303		4.1 kg	3.7m = 15 kg
25.4 mm Ø	304			4.0m = 16.1 kg
25.4 mm Ø	316			
28.58 mm Ø	303		5.25 kg	3.7m = 19.5 kg
28.58 mm Ø	304			4.0m = 21 kg
28.58 mm Ø	316			
30 mm Ø	303		5.8 kg	3.7m = 21.5 kg
30 mm Ø	304			4.0m = 23.5 kg
30 mm Ø	316			
31.75 mm Ø	303		6.5 kg	3.7m = 24 kg
31.75 mm Ø	304			4.0m = 26 kg
31.75 mm Ø	316			
34.93 mm Ø	303		7.85 kg	3.7m = 29 kg
34.93 mm Ø	304			4.0m = 31.5 kg
34.93 mm Ø	316			
35 mm Ø	303		7.9 kg	3.7m = 29.5 kg
35 mm Ø	304			4.0m = 31.5 kg
35 mm Ø	316			
38.1 mm Ø	303		9.35 kg	3.7m = 34.5 kg
38.1 mm Ø	304			4.0m = 37.5 kg
38.1 mm Ø	316			
41.27 mm Ø	303		11 kg	3.7m = 40.5 kg
41.27 mm Ø	304			4.0m = 43.8 kg
41.27 mm Ø	316			
44.45 mm Ø	303		12.7 kg	3.7m = 47 kg
44.45 mm Ø	304			4.0m = 51 kg
44.45 mm Ø	316			
50.8 mm Ø	303		21.7 kg	3.7m = 47 kg
50.8 mm Ø	304			4.0m = 51 kg
50.8 mm Ø	316			
63.5 mm Ø	303		25.9 kg	3.7m = 96 kg
63.5 mm Ø	304			4.0m = 104 kg
63.5 mm Ø	316			
69.85 mm Ø	303		33.34 kg	3.7m = 116 kg
69.85 mm Ø	304			4.0m = 126 kg
69.85 mm Ø	316			



Square Bar ■				
Section (mm)	Grade	Finish	kg / m	kg / length
6 mm	304	CD or HRAP	0.3 kg	3m = 0.89 kg
6 mm	316			4m = 1.18 kg
7 mm	304		0.41 kg	3m = 1.21 kg
7 mm	316			4m = 1.61 kg
9mm	304		0.67 kg	3m = 2.0 kg
9 mm	316			4m = 2.65 kg
11 mm	304		1.0 kg	3m = 3 kg
11 mm	316			4m = 4 kg
13 mm	304		1.39 kg	3m = 4.2 kg
13 mm	316			4m = 5.6 kg
15 mm	304		1.84 kg	3m = 5.6 kg
15 mm	316			4m = 7.4 kg
19 mm	304		3.0 kg	3m = 9 kg
19 mm	316			4m = 12kg
25 mm	304		5.12 kg	3m = 15.5 kg
25 mm	316			4m = 20.5 kg
31 mm	304		7.9 kg	3m = 24 kg
31 mm	316			4m = 32 kg
37 mm	304		11.2 kg	3m = 34 kg
37 mm	316			4m = 45 kg
40 mm	304		13.1 kg	3m = 40 kg
40 mm	316		13.1 kg	4m = 53 kg
44 mm	304		15.9 kg	3m = 48 kg
44 mm	316			4m = 64 kg
50 mm	304		20.5 kg	3m = 62 kg
50 mm	316			4m = 82 kg



WE ALSO DISTRIBUTE THE
ORCON RANGE OF MILD STEEL
PLEASE CALL US FOR A PRICE

SAS Sales Pty Ltd

Stainless Steel & Steel Merchants

9 Centre Place
Wetherill Park NSW 2164
Phone: (02) 9725 2221
Fax: (02) 9725 2224

